

3BHK
TWIN LUXURIOUS
BUNGALOW



Why Live In A Bungalow?

More Space:

Bungalows offer ample room, great for families.

Privacy:

Standalone homes mean more privacy.

Garden:

Enjoy a private outdoor space or garden.

Flexible Design:

Easily customize the interior.

Natural Light:

Bright and well-ventilated interiors.

Quiet Living:

No upstairs or downstairs neighbors

Safety:

Lower risk of accidents or break-ins.

Suitable for All:

Ideal for families, couples, and seniors.

Entertaining:

Spacious layout for hosting guests.

Resale Value:

Bungalows hold their value well.





Welcome to "Kalpataru Sarthak"

A luxurious **3BHK twin G+1 bungalow project** that offers spacious living at an affordable price.

These well-designed bungalows are strategically located with **9-meter road front**, providing excellent connectivity without compromising on **peace and tranquillity**.

Our **spacious homes** are thoughtfully crafted to cater to the **needs of all family members**, ensuring a **comfortable and harmonious** living experience.

Discover the **perfect blend of luxury and affordability** at "Kalpataru Sarthak" and make your dream home a reality.



Internal & External Amenities

RCC & BBM WORKS

Branded Cement for all RCC works of the project.

Branded Steel for the project.

6" RED bricks for External walls & 4" internal walls.

External Sand Faced Plaster in Two Coats & Internal Gypsum Plaster for Internal walls.

INTERNAL FINISH OF FLATS: FLOOR FINISH

Vitrified Tiles Flooring (800Mm x 800mm) for Living, Kitchen & Dining Area.

800mm x 800 mm Vitrified Tiles flooring all Bedrooms.

KITCHEN

Granite Kitchen with Stainless Steel Sink.

600x600mm/300 x 600mm High Quality Vitrified tile dado up to lintel level.

Provisions for R.O. Water Purifier.

WASHING & UTILITY

600x600mm Vitrified Flooring & 300 x 600mm/ 60mm x 600mm on dado with Electrical & Plumbing provision of Washing Machine

TOILETS

600x600mm/ 300 x 600mm vitrified Tiles up to lintel level.

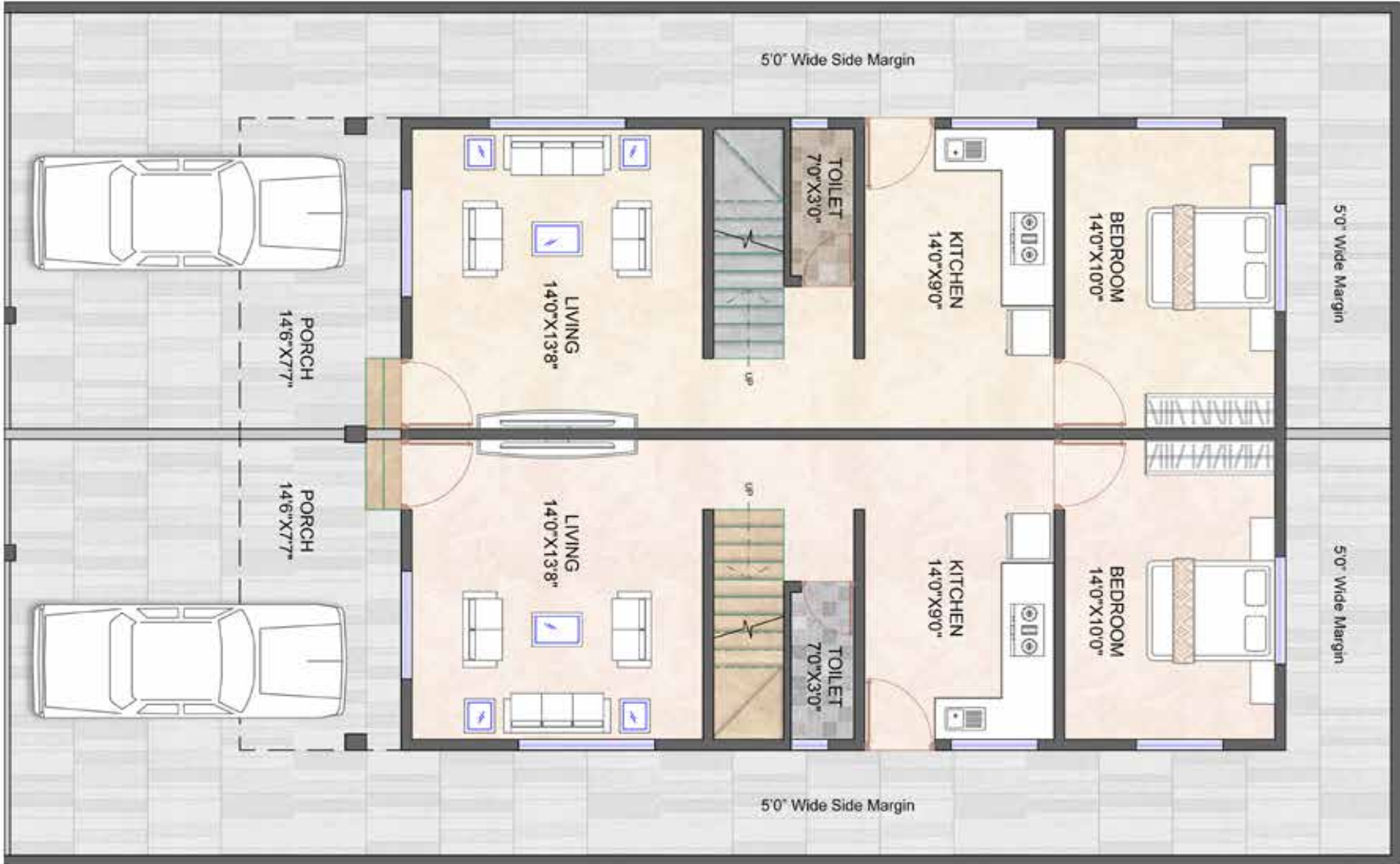
Sanitary ware of Jaquar or Equivalent Make.

CP Fittings of Jaquar or Equivalent Make.

CPVC Concealed Piping of Astral Company or equivalent make and UPVC/ PVC piping for drainage supply.

Provision of Instant Geyser in toilets.

Ground Floor



Internal & External Amenities

DOORS & WINDOWS

- Main Door of 32mm (0.8mm Laminate on both Faces) with Plywood frame provided with premium make locks and fittings with installation of Video Door Phone for security purpose.
- Internal Door Frame of granite with standard quality 30mm flush door with laminate (0.8mm) on doors both side with premium makes lock and fittings.
- All window opening provided with granite stone frame with Jindal make Aluminium windows with glass and Mosquito net.
- Well Designed MS Safety Grill for each window & SS Railing in Balcony & Staircase.

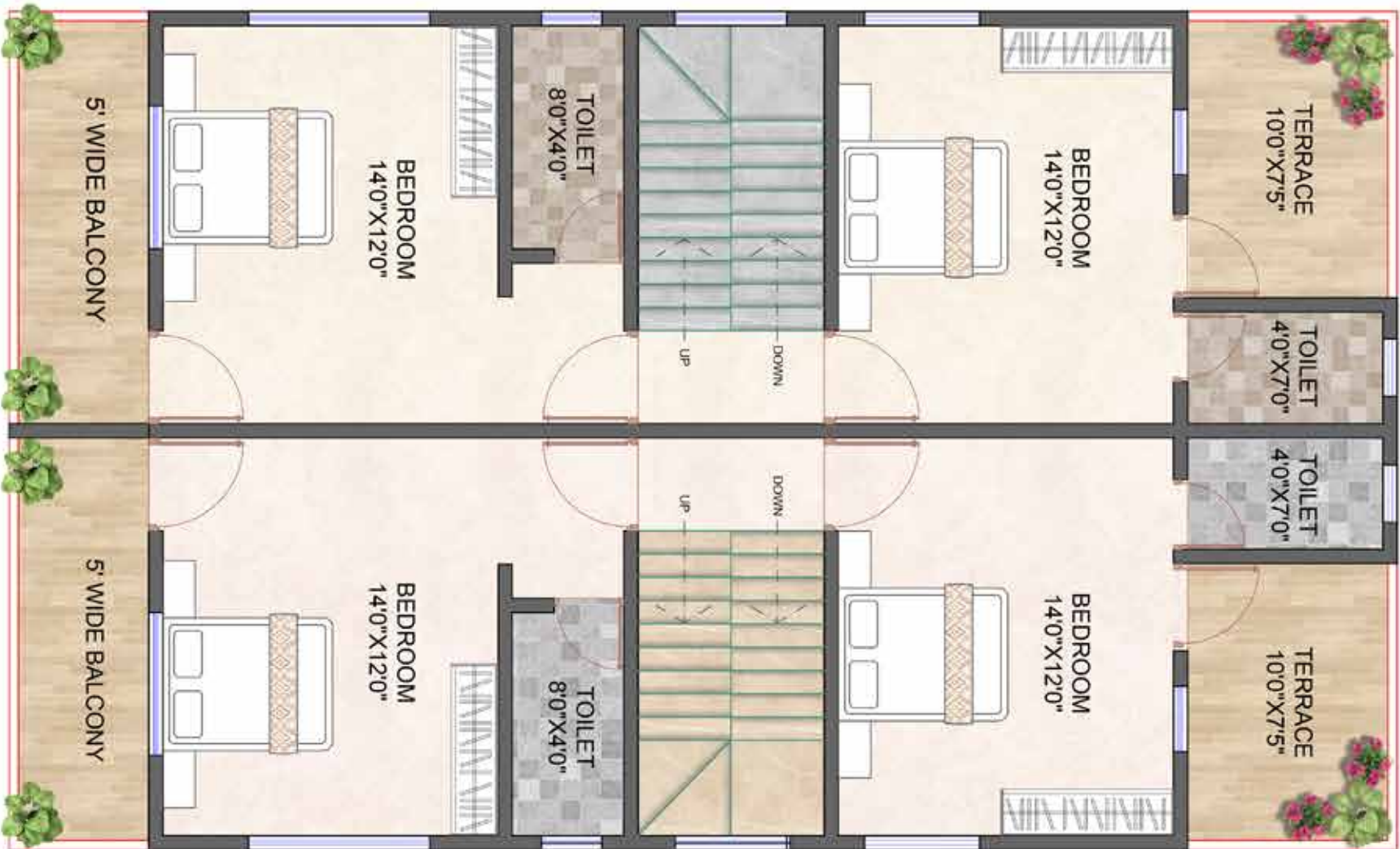
WALL SURFACE

- Gypsum Plaster on Internal Surface of walls.
- Tractor Emulsion colour on walls, ceiling and weather shield paint (Apex Ultima or equivalent) on exterior walls of Asian Paint or equivalent.

INTERNAL ELECTRICAL

- All Conduit pipes shall be precision or Equivalent.
- Provision of Point wiring in concealed copper wiring of Polycab or equivalent for all Rooms.
- Provision of Invertor Back up.
- Provision of Point Wiring for Electrical Geyser, Washing Machine, AC points for Bed Rooms, RO Purifier.
- DB, MCB of L& T or equivalent.
- Switches of Wipro, Havells or equivalent

First Floor



Ground Floor Cut View



↑
NORTH

Ground Floor

First Floor Cut View



↑
NORTH

First Floor

EMBRACE THE
BUNGALOW LIFESTYLE.
SAY YES TO THE PERFECT HOME!

Project By:



On Going Projects



Contact:
89835 42176 | 87935 42176

Site Address: Sr. No. 2411/3, Plot No. 03,04,05,06,
Panchawad Ganesh Nagar, Ozar (MIG), Nashik-422206

Head office address: Kalpataru Buildcon, Lohiya Nagar Road,
Ozar (MIG), Nashik-422206